

# NE-24

## Signal Light



LED



ø57

IP65

NPN/PNP  
Open collector

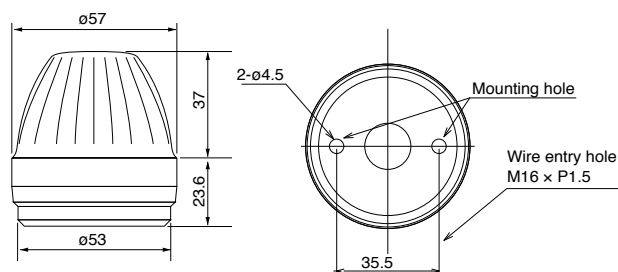


### NE series LED Dome Indicator Light

The dome shape provides increased visibility and the LEDs provide years of maintenance-free operation.

- Enhanced Illumination : Use of long-life, super bright LED.
- Energy Efficient : Low power consumption.
- Maintenance-Free : High vibration resistant and no bulb replacement needed.
- Terminal Block : For easy wiring.
- Applications : Suitable for small machine tools, control panel, etc.
- Available colors : Red, Amber, Green, Blue, Clear/White.

### Dimensions



### NE-24 Type

Model	NE-24				
Rated Voltage	24V DC (No polarity) NPN/PNP open collector				
Operating Voltage Range	21.6V ~26.4V DC				
Power Consumption	Red 0.63W	Amber 0.63W	Green 0.56W	Blue 0.53W	Clear/White 0.45W
Operating Temperature Range (Relative humidity)	-30°C~+ 50°C (Less than 90%)				
Mounting Place	Indoor & Outdoor				
Mounting Direction	Upright, Upside down & Horizontal				
Protection Rating	IP65				
Vibration Proof	19.6m/s <sup>2</sup>				
Luminosity Intensity	Red 100mcd	Amber 400mcd	Green 340mcd	Blue 100mcd	Clear/White 460mcd
Mass	55g				