



3
YEAR WARRANTY



iRis Series Human Machine Interfaces

iRis Series Human Machine Interfaces

Optimised for Smart Factory Environments

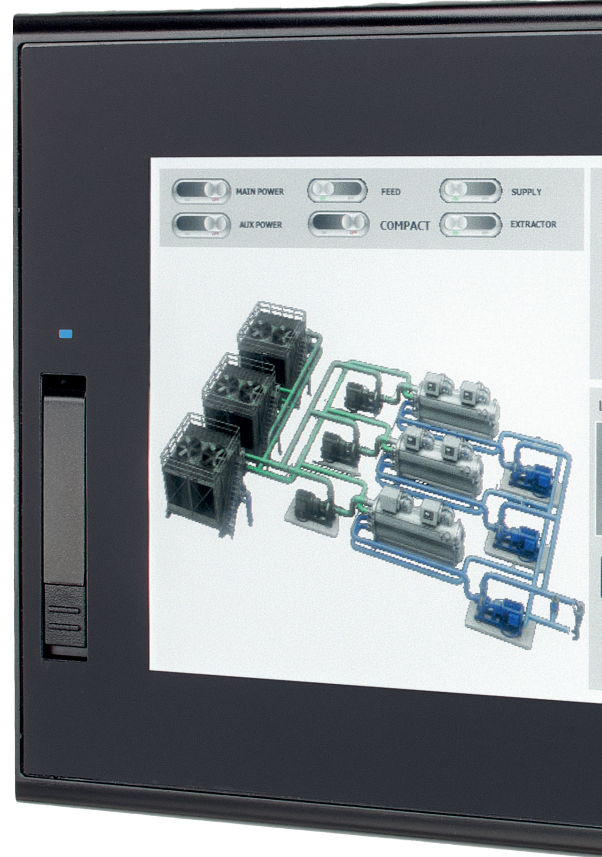
The iRis Series HMI redefines what is expected from a modern human-machine interface in factory automation. Moving beyond the limitations of conventional HMIs, it delivers advanced connectivity, intelligent functionality and dependable performance, all within a secure and scalable platform.

Designed to integrate effortlessly with a wide range of devices and control systems, the iRis Series HMI supports seamless data exchange and real-time monitoring, enabling smarter decision-making across the production environment. The flexible architecture allows it to adapt to both simple applications and complex, data-driven operations, making it a reliable foundation for digital transformation initiatives.

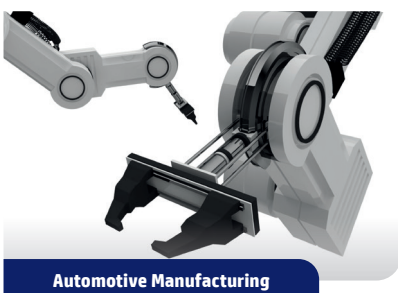
With a strong focus on stability and cybersecurity, the iRis Series ensures continuous operation in demanding industrial environments while safeguarding critical system data. This makes it an ideal choice for manufacturers looking to enhance efficiency, reduce downtime and future-proof their operations.

Its versatility extends across a wide spectrum of industries. The iRis Series HMI is trusted in high-precision sectors such as semiconductor and display manufacturing, while also supporting fast-growing and high-demand industries including automotive, mobile devices, energy storage, pharmaceutical and bio-processing.

Whether deployed in advanced smart factories or evolving production facilities, the iRis Series HMI provides the performance, flexibility and confidence required to drive productivity and support long-term growth.



One platform, total control, delivering precision, visibility and efficiency across every critical industry.



Automotive Manufacturing

HMIs control and monitor robotic assembly lines, welding systems and conveyor operations to ensure precision, efficiency and repeatability.



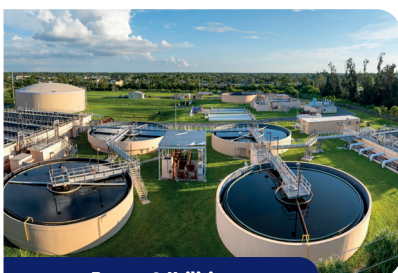
Food & Beverage Processing

Used to manage production lines, batching, packaging and hygiene-critical processes with clear visual control and traceability.



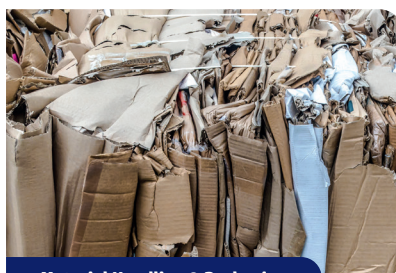
Pharmaceuticals & Bio

HMIs provide accurate control of cleanroom processes, ensuring compliance, traceability and consistent product quality.



Energy & Utilities

Supports monitoring and control of power generation, water treatment and distribution systems with real-time data visibility.



Material Handling & Packaging

Enables efficient control of conveyors, sortation systems and automated packaging lines to improve throughput and reduce errors.

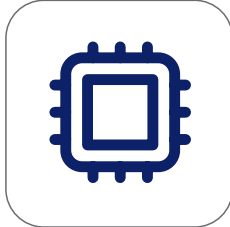


Semiconductor & Electronics

Delivers precise control of highly sensitive manufacturing processes where accuracy and stability are critical.

Designed to enhance usability, improve performance and simplify integration in modern industrial environments

High-Speed Quad Core Processing



Delivers rapid data handling and smooth operation, ensuring responsive control and real-time performance across demanding applications.

Vivid 16M Colour Display



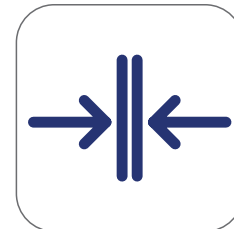
Provides bright, high-resolution visuals with rich colour depth, enabling clear data interpretation and supports a full vector image library.

Intuitive Touch Navigation



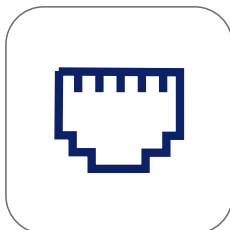
Streamlines operation with responsive touch and drag functionality, allowing users to make picture memos or scroll down to access top menu.

Integrated Slimline Design



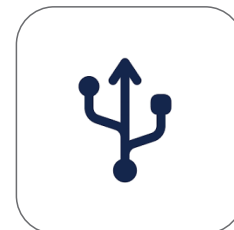
Combines a refined, space-saving form with robust construction, making installation easier while maintaining durability in industrial environments.

Dual Ethernet Connectivity



Supports multiple network connections with independent IP channels, enabling flexible communication across complex automation systems. *Model dependant.

Front USB OTG Access



Allows quick connection to external devices for data transfer, updates and diagnostics without opening panels or interrupting operation.

Certified for Harsh Environments (T6)



Built and certified for use in demanding conditions, providing safe, reliable performance where temperature and environmental factors are critical. *Model dependant.

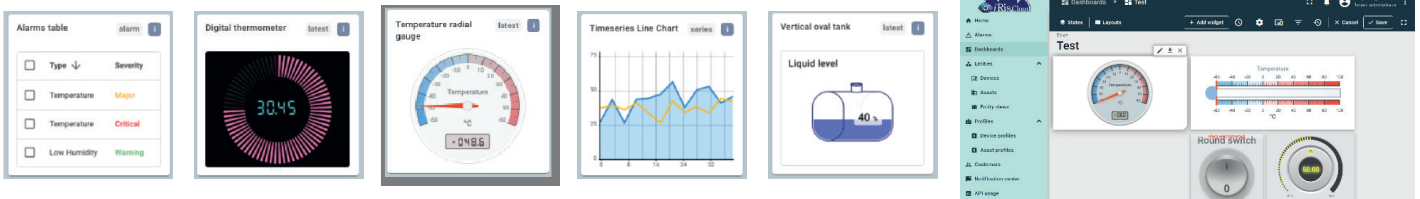
Three Year warranty



All IMO Human Machine Interfaces are covered by our industry-leading Three Year Warranty.

iRisCloud Features

iRisCloud dashboards offer an intuitive drag and drop interface with a diverse widget library, allowing real time data visualization of data received from iRis units using the MQTT protocol. Users can customize layouts and display device values and attributes. With responsive design, sharing options, and interactive widget features, these dashboards empower users to create dynamic visualizations and analyse historical data. Seamless automatic scaling across desktop and mobile devices ensures an optimised user experience on any platform.



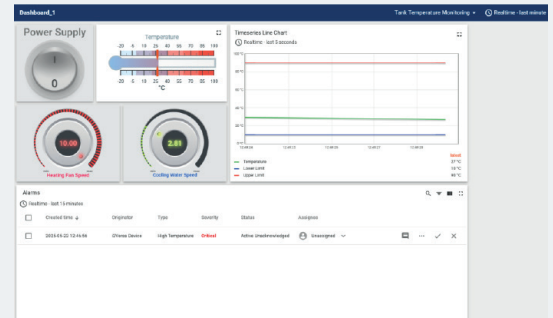
Seamless connection & failsafe server configuration

On the iRisCloud platform, users can quickly and easily configure their iRis device to connect and start publishing data. Users can select tags to push to the iRisCloud, and their iRis device will manage the data transfer automatically, requiring no further configuration.

User management

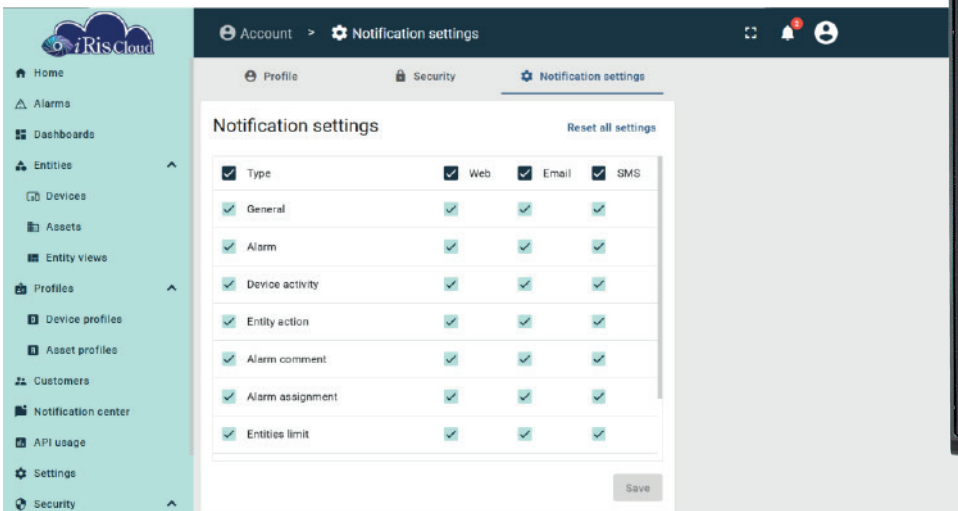
With advanced user management, iRisCloud allows administrators to easily create and configure customers, assign devices, and manage dashboards—from a centralized interface. Whether you're handling multiple users, internal customers, or millions of connected assets, iRis Cloud ensures efficient control and accessibility.

Seamless Customer Creation & Management – Easily add, edit, or remove customers and users, ensuring secure access and role based control.
 Customizable Dashboards & Alerts – Assign home dashboards and real time alarms to stay ahead of critical system changes.



Instant & customizable notifications

- Stay informed with real-time alerts via web, email.
- User configured auto escalations to ensure critical issues are addressed promptly.



Real-time data with MQTT protocol

- *iRisCloud* uses the lightweight MQTT protocol for real time data transfer with minimal bandwidth usage.
- Continuously stream device data and status updates for instant visualization and analysis on custom dashboards.
- Remain connected to your operations through secure, low latency data exchange that scales with your system.



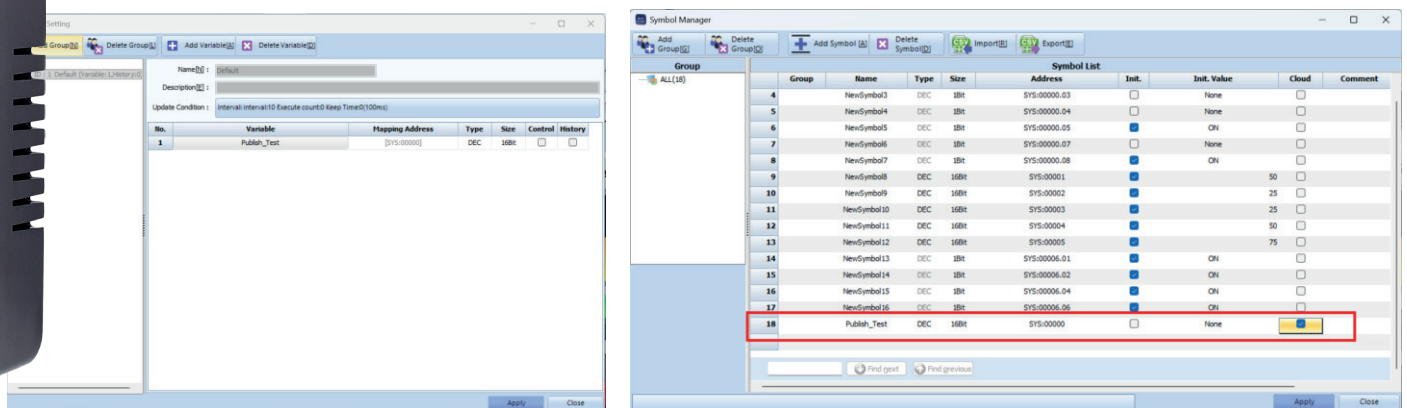
Maps

iRisCloud integrates interactive map widgets directly into your custom dashboards, providing a visual representation of your entire hardware network. Combined with real time alarm monitoring, you can view the location of alarm events as they occur.



Effortless integration with *iRis Developer*

- Configure your *iRis* devices with *iRisCloud* easily using *iRis Developer*. With just a few simple steps, establish secure communication between your devices and the *iRisCloud*. Quickly set up data monitoring and control to enhance operational efficiency.





Quad Core CPU

Quad core processor for rapid processing speed



Touch Drag Feature

Touch drag feature for picture memos and accessing top menu



Front-Side OTG USB

Supporting both HOST mode (USB devices i.e. Memory, barcode reader, etc) and program transmission mode



Multiple display options

Available in 10.2" (800 x 480), 7" (800 x 480) and 4.3" (480 x 272)



16M Full Colour Display

Bright and vivid full Colour, supports vector image library



VNC/ Email/ FTP Support

VNC for remote access. FTP for file transfer and data management. Email functionality for alarm notifications.



2x Serial and Ethernet Channels

COM1 / COM2 serial ports Supports Network with different IP's (10" only)



Cloud functionality

Cloud connectivity via MQTT for remote control and data acquisition

Technical Specifications

Function	Description	IR10S-SEBP	IR07S-SEBP	IR04S-SEAP
Display	Display Type	10.2" TFT Colour	7" TFT Colour	4.3" TFT Colour
	Colour	16M Colours		
	Display Area	222.72 x 125.28 mm (8.77 x 4.93 in)	154 x 86 (6.06 x 3.38 in)	95.04 x 53.85 (3.74 x 2.12 in)
	Resolution	800 x 480		480 x 272
	Brightness Level	10 Levels (by software)		
	Backlight Type	LED		
	Backlight Life	>50,000 hours		
Touch	Touch Type	Resistive		
	Touch Life	>1 million times		
Interface	Serial COM1	RS-232C Connector: DSUB 9 pin x 1		RS-232C only. RS-422/485 only. Connector: DSUB 9 pin x 1
	Serial COM2	RS-232C, RS-422/485 Connector: DSUB 9 pin x 1		
	Ethernet	IEEE802.31/IEEE802.3u, 10BASE-T /100BASE-TX Connector: RJ-45		
	USB Host	USB 2.0 Compatible, Output 5Vdc/0.5A Support: USB Storage, USB Barcode Scanner (Standard Keyboard Protocol) Connector: USB Type A x 1		-
	USB OTG	USB 2.0 Compatible, Output 5Vdc/0.5A, Max 3m Support: USB Storage, USB Barcode Scanner (Standard Keyboard Protocol). Connector: USB Mini-B (Front) x 1		
	SD Card	SD Card Slot x 1, SDHC (MAX 32GB)		
	Printer	Roll Printer (EPSON protocol)		
Memory	Screen Memory	128MB		64MB
	Backup Memory	512KB: System buffer (10K Word), Including Alarm/Logging/Recipe		
	Backup Period	Permanent		
	Real Time Clock	Built in		
	Status LED	3 LEDs (Power, Operation, Link) Built in		
Power	Input Voltage	24VDC (20~28VDC)		
	Power Consumption	15W (625mA)	12W (500mA)	
Environment	Operating Temperature	-10 ~ +50°C (14 ~ 122°F)		
	Storage Temperature	-20 ~ +60°C (-4 ~ 140°F)		
	Operating Humidity	0 ~ 90 %RH (No dew)		
	Atmosphere	No corrosive gas		
	Vibration Endurance	Amplitude: 10 ≤ F < 25Hz (2G) X,Y,Z each direction (for 30 minutes)		
	Noise Immunity	1,000Vp-p (Pulse Width 1µs)		
	Static Electricity Discharge	Connective discharge from EN61000-4-2: ±4kV		
	Shock Endurance	10G X,Y,Z each direction (x3)		
	Ground Connection	Class 3 (100Ω under)		
	Protection Classification	IP65 (Front)		
Certification	UKCA, CE, UL/cUL			
Construction	Panel Cut	260 x 202mm (10.24 x 7.95in)	197 x 127mm (7.76 x 5.00in)	121 x 95mm (4.76 x 3.74in)
	External Dimension	274 x 216 x 64.7mm (10.79 x 8.50 x 2.55in)	212 x 145 x 45.6mm (8.35 x 5.71 x 1.80in)	128.6 x 102.6 x 38mm (5.06 x 4.04 x 1.50in)
	Weight	1.7kg (3.75lbs)	0.72kg (1.59lbs)	0.28kg (0.62lbs)
	Cooling System	Natural air circulation		
	Bezel Material	Polycarbonate (Flame Resistant)		



Quad Core CPU

Quad core processor for rapid processing speed



Touch Drag Feature

Touch drag feature for picture memos and accessing top menu



Front-Side OTG USB

Supporting both HOST mode (USB devices i.e. Memory, barcode reader, etc) and program transmission mode



Multiple display options

Available in 15" (1024 x 768), 12.1" (800 x 600), 10.4" (800 x 600), 8.4" (800 x 600) and 5.6" (640 x 480)



16M Full Colour Display

Bright and vivid full Colour, supports vector image library



VNC/ Email/ FTP Support

VNC for remote access. FTP for file transfer and data management. Email functionality for alarm notifications.



3x Serial and 2x Ethernet Channels

COM1 / COM2 / COM3 serial ports Supports Network with different IP's (10" and above)



Cloud functionality

Cloud connectivity via MQTT for remote control and data acquisition



OPC UA Support

Built in OPC UA support for SCADA and IIOT integration

Technical Specifications

Function	Description	IR15P-SECP	IR12P-SECP	IR10P-SECP	IR08P-SEBP	IR05P-SEBP
Display	Display Type	15" TFT Colour	12.1" TFT Colour	10.4" TFT Colour	8.4" TFT Colour	5.6" TFT Colour
	Colour	16M Colours				
	Display Area	304.1 x 228.1mm (11.97 x 8.98 in)	246 x 184.5mm (9.68 x 7.26 in)	211.2 x 158.4mm (8.31 x 6.24 in)	170.4 x 127.8mm (6.71 x 5.03 in)	112.9 x 84.7mm (4.44 x 3.33 in)
	Resolution	1024 x 768		800 x 600		640 x 480
	Brightness Level	10 Levels (by software)				
	Backlight Type	LED				
	Backlight Life	> 50,000 hours				
Touch	Touch Type	Resistive				
	Touch Life	> 1 million times				
Interface	Serial COM1	RS-232C, RS-422/485 Connector: DSUB 9pin x 1				
	Serial COM2	RS-232C, RS-422/485 Connector: DSUB 9pin x 1				
	Serial COM3	RS-485 Connector: 3.5mm 3 pin x 1			Not available	
	Ethernet	IEEE802.3i/IEEE802.3u, 10BASE-T/100BASE-TX Connector: RJ-45				
	USB Host	USB 2.0 Compatible, Output: 5Vdc/0.5A Support: USB Storage, USB Barcode Scanner (Standard Keyboard Protocol) Connector: USB Type A x 1				
	USB OTG	USB 2.0 Compatible, Output: 5Vdc/0.5A, Max 3m Support: USB Storage, USB Barcode Scanner (Standard Keyboard Protocol) Connector: USB Mini-B (Front) x 1				
	SD Card	SD Card Slot x 1, SDHC (MAX 32GB)				
	Printer	Roll Printer (EPSON protocol)				
Memory & Others	Screen Memory	128MB				
	Backup Memory	512KB: System buffer (10K Word), Including Alarm/Logging/Recipe				
	Backup Period	Permanent				
	Real Time Clock	Built-in				
	Status LED	3 LEDs (Power, Operation, Link) Built-in				
Power	Input Voltage	24Vdc (20~28Vdc)				
	Power Consumption	18W (750mA)	15W (625mA)		12W (500mA)	
Environment	Operating Temperature	-10 ~ +50°C (14 ~ 122°F)				
	Storage Temperature	-20 ~ +60°C (-4 ~ 140°F)				
	Operating Humidity	0 ~ 90% RH (No dew)				
	Atmosphere	No corrosive gas				
	Vibration Endurance	Amplitude: 10 ≤ F < 25Hz (2G) X, Y, Z each direction (for 30 minutes)				
	Noise Immunity	1000Vp-p (Pulse width 1µs)				
	Static Electricity Discharge	Connective discharge from EN61000-4-2: ±4kV				
	Shock Endurance	10G X, Y, Z each direction (x3)				
	Ground Connection	Class 3 (100Ω under)				
	Protection Classification	IP65 (Front)				
	Certification	UKCA, CE, UL/cUL				
Construction	Panel Cut	355 x 286mm (13.98 x 11.26in)	306 x 247mm (12.05 x 9.72in)	260 x 202mm (10.24 x 7.95in)	222 x 168mm (8.74 x 6.61in)	158 x 126mm (6.22 x 4.96in)
	External Dimensions	369 x 300 x 67.2mm (14.53 x 11.81 x 2.65in)	320 x 261 x 64.7mm (12.60 x 10.28 x 2.55in)	274 x 216 x 64.7mm (10.79 x 8.50 x 2.55in)	236 x 182 x 58.9mm (9.29 x 7.17 x 2.32in)	172 x 140 x 58mm (6.77 x 5.51 x 2.28in)
	Weight	2.78kg (6.13lbs)	2.18kg (4.81lbs)	1.68kg (3.70lbs)	1.06kg (2.34lbs)	0.62kg (1.37lbs)
	Cooling System	Natural air circulation				
	Bezel Material	Polycarbonate (Flame Resistant)				

iRis Plus - ATEX Series



ATEX approval confirms that equipment is safe for use in potentially explosive atmospheres, such as environments where flammable gases, vapours or dust may be present. Products certified to ATEX standards are designed and tested to minimise the risk of ignition, ensuring safe operation in hazardous industrial settings including chemical processing, oil and gas and material handling.



Quad Core CPU

Quad core processor for rapid processing speed



Touch Drag Feature

Touch drag feature for picture memos and accessing top menu



Front-Side OTG USB

Supporting both HOST mode (USB devices i.e. Memory, barcode reader, etc) and program transmission mode



Multiple display options

Available in 15" (1024 x 768), 12.1" (800 x 600) and 10.4" (800 x 600)



T6 Temperature Control Certification

T6 Temperature class rating for hazardous applications



16M Full Colour Display

Bright and vivid full Colour, supports vector image library



VNC/ Email/ FTP Support

VNC for remote access. FTP for file transfer and data management. Email functionality for alarm notifications.



3x Serial and 2x Ethernet Channels

COM1 / COM2 / COM3 serial ports Supports Network with different IP's (10" and above)



Cloud functionality

Cloud connectivity via MQTT for remote control and data acquisition



OPC UA Support

Built in OPC UA support for SCADA and IIOT integration

Technical Specifications

Function	Description	IR15P-SECP-X	IR12P-SECP-X	IR10P-SECP-X
Display	Display Type	15" TFT Colour	12.1" TFT Colour	10.4" TFT Colour
	Colour	16M Colours		
	Display Area	304.1 x 228.1mm (11.97 x 8.98 in)	246 x 184.5mm (9.68 x 7.26 in)	211.2 x 158.4mm (8.31 x 6.24 in)
	Resolution	1024 x 768		800 x 600
	Brightness Level	10 Levels (by software)		
	Backlight Type	LED		
	Backlight Life	>50,000 hours		
Touch	Touch Type	Resistive		
	Touch Life	>1 million times		
Interface	Serial COM1	RS-232C, RS-422/485 Connector: DSUB 9pin x 1		
	Serial COM2	RS-232C, RS-422/485 Connector: DSUB 9pin x 1		
	Serial COM3	RS-485 Connector: 3.5mm 3pin x 1		
	Ethernet	IEEE802.3i/IEEE802.3u, 10BASE-T/100BASE-TX Connector: RJ-45		
	USB Host	USB 2.0 Compatible, Output: 5Vdc/0.5A Support: USB Storage, USB Barcode Scanner (Standard Keyboard Protocol) Connector: USB Type A x 1		
	USB OTG	USB 2.0 Compatible, Output: 5Vdc/0.5A, Max 3m Support: USB Storage, USB Barcode Scanner (Standard Keyboard Protocol) Connector: USB Mini-B (Front) x 1		
	SD Card	SD Card Slot x 1, SDHC (MAX 32GB)		
	Printer	Roll Printer (EPSON protocol)		
Memory & Others	Screen Memory	128MB		
	Backup Memory	512KB: System buffer (10K Word), Including Alarm/Logging/Recipe		
	Backup Period	Permanent		
	Real Time Clock	Built-in		
	Status LED	3 LEDs (Power, Operation, Link) Built-in		
Power	Input Voltage	24Vdc (20~28Vdc)		
	Power Consumption	18W (750mA)	15W (625mA)	
Environment	Operating Temperature	-10 ~ +50°C (14 ~ 122°F)		
	Storage Temperature	-20 ~ +60°C (-4 ~ 140°F)		
	Operating Humidity	0 ~ 90% RH (No dew)		
	Atmosphere	No corrosive gas		
	Vibration Endurance	Amplitude: 10 ≤ F < 25Hz (2G) X, Y, Z each direction (for 30 minutes)		
	Noise Immunity	1000Vp-p (Pulse width 1µs)		
	Static Electricity Discharge	Connective discharge from EN61000-4-2: ±4kV		
	Shock Endurance	10G X, Y, Z each direction (x3)		
	Ground Connection	Class 3 (100Ω under)		
	Protection Classification	IP54 (Front)		
	Certification	Explosion proof model: UKCA, CE, UL/cUL, IECEx, ATEX		
Construction	Panel Cut	355 x 286mm (13.98 x 11.26in)	306 x 247mm (12.05 x 9.72in)	260 x 202mm (10.24 x 7.95in)
	External Dimensions	369 x 300 x 67.2mm (14.53 x 11.81 x 2.65in)	320 x 261 x 64.7mm (12.60 x 10.28 x 2.55in)	274 x 216 x 64.7mm (10.79 x 8.50 x 2.55in)
	Weight	2.78kg (6.13lbs)	2.18kg (4.81lbs)	1.68kg (3.70lbs)
	Cooling System	Natural air circulation		
	Bezel Material	Polycarbonate (Flame Resistant)		

Hand-held Control for critical safety environments

Designed for safe operation in hazardous environments, hand-held HMIs feature integrated safety controls such as Emergency Stop and 3-position enable switches. This allows operators to enter machine areas, inspect moving components, and perform maintenance tasks while maintaining immediate shutdown capability.



Wired and Wireless Handheld Design

Optimised for mobility, allowing operators to move freely around machinery while maintaining direct system control.



Ergonomic Lightweight Body

A refined, integrated body designed for comfortable, long-term manual operation without fatigue.



High-Resolution 7" Display

Features a brilliant 16M full-colour TFT LCD with vector image support for crisp, high-visibility monitoring.



Industrial Connectivity

High-speed communication interface for PLCs, servo systems, and advanced industrial controllers via integrated Wifi*, Ethernet and multi-protocol serial ports (RS-232C, RS-422 / 485).
*Model dependant.



Hard-Wired Emergency Stop

Built-in safety switch for immediate machinery shutdown during critical events.



Enabling "Dead Man" Switch

Integrated safety grip prevents accidental operation by requiring a held position for active machine movement.



Safety in every movement

Safe operation in demanding industrial environments.



Hard-Wired Emergency Stop

Integrated safety grip prevents accidental operation by requiring a held position for active machine movement.

3-Position Enable Switch

Ensures operation only when the switch is actively and safely engaged.

Safe operation Inside Machine Areas

Allows inspection and maintenance while maintaining immediate shutdown capability.

Applications



Robot Teach-In and Calibration

The iRis Mobile HMI enables precise teaching and calibration of robotic systems. Operators can safely position themselves close to the robot, monitor movements in real time, and guide operations with accuracy.



Large-Scale Machine Operation

Ideal for large machinery, the handheld iRis HMI allows engineers to operate, adjust, and monitor equipment directly at the point of action, improving efficiency and reducing response time.



Material Handling and AGVs

iRis Mobile offers enhanced control and troubleshooting of Automated Guided Vehicles (AGVs) and conveyor systems. This allows operators to perform real-time diagnostics, reroute operations and carry out maintenance tasks seamlessly across the facility.

Industrial Connectivity

Seamless integration with a wide range of industrial systems through Wifi, high-speed Ethernet and multi-protocol serial communication.



Ethernet
High-speed communication for real-time data exchange



Wifi
Wireless communication via Wifi



Serial Ports
RS-232C, RS-422 / 485
Multi-protocol support



PLC / Controllers

Servo Systems

I/O & Remote Devices



Function	Description	IR07M-S00P-W
Display	Display Type	7" TFT Colour
	Colour	16M Colours
	Display Area	154.21 x 85.92mm (6.07 x 3.38 in)
	Resolution	1024 x 600
	Brightness Level	10 Levels (by software)
	Backlight Type	LED
	Backlight Life	> 50,000 hours
Touch	Touch Type	Resistive
	Touch Life	> 1 million
Interface	Wireless LAN	2.4G: 2.4000GHz~2.4835GHz. 5G: 5.150GHz-5.725GHz. WLAN Standard: IEEE802.11 a/b/g/n. Operation Range: Up to 150 meters in open space. Security: WEP, TKIP/AES, WPA, WPA2
	USB Host	USB 2.0 Compatible, Output: 5Vdc/0.5A. Support: USB Storage, USB Barcode Scanner (Standard Keyboard Protocol). Connector: USB Type A x 2
	USB OTG	USB 2.0 Compatible, Output: 5Vdc/0.5A, Max 3m. Support: USB Storage, USB Barcode Scanner (Standard Keyboard Protocol). Connector: USB Mini-B x 1
	SD Card	SD Card Slot x 1, SDHC (MAX 32GB)
	Function Key	6 Position with LED
	Mechanical Switches	Keylock Switch 1A, 3 Position enable Switch OFF-ON-OFF (1CH)
	Power Switch	Push-Push power on-off switch built in
Memory & Others	Screen Memory	128MB
	Backup Memory	512KB: System buffer (10K Word), Including Alarm/Logging/Recipe
	Backup Period	Permanent
	Real Time Clock	Built-in
	Status LED	3 LEDs (Power, Operation, Link) Built-in
Battery	Rechargeable & Extractable Battery Pack	2S-2P Li-ion 4 Cells 7.2Vdc 6800mAh. Charging time 3 hours (Non-operating). Running time: 7 hours with wireless communication
Power	Consumption	20W (In Battery Pack)
Environment	Operating Temperature	-10 ~ +45°C (14 ~ 113°F)
	Storage Temperature	-20 ~ +60°C (-4 ~ 140°F)
	Operating Humidity	0 ~ 90% RH (No dew)
	Atmosphere	No corrosive gas
	Vibration Endurance	Amplitude $10 \leq f < 25\text{Hz}$ (2G) X, Y, Z each direction (for 30 minutes)
	Static Electricity Discharge	Connective discharge from EN61000-4-2: $\pm 4\text{kV}$
	Shock Endurance	10G X, Y, Z each direction (x3)
	Protection Classification	IP65
	Certification	UKCA, CE, UL/cUL
Construction	External Dimension	237 x 205 x 103mm (9.33 x 8.07 x 4.05 in)
	Weight	1.32kg (2.91lbs) Including Battery Pack
	Cooling System	Natural air circulation
	Bezel Material	Polycarbonate (Flame Resistant)

Accessories

Product Code	Description
IRM-DST	Docking Station
IRM-BAT	Battery





Function	Description	IR07M-SEBP-C
Display	Display Type	7" TFT Color
	Color	16M Colors
	Display Area	154.21 x 85.92mm (6.07 x 3.38 in)
	Resolution	1024 x 600
	Brightness Level	10 Levels (by software)
	Backlight Type	LED
	Backlight Life	> 50,000 hours
Touch	Touch Type	Resistive
	Touch Life	> 1 million
Interface	Serial COM	RS-232C, RS-422/485
	Ethernet	IEEE802.3i/IEEE802.3u, 10BASE-T/100BASE-TX
	USB Host	USB 2.0 Compatible, Output: 5Vdc/0.5A Support: USB Storage, USB Barcode Scanner (Standard Keyboard Protocol) Connector: USB Type A x 2
	USB OTG	USB 2.0 Compatible, Output: 5Vdc/0.5A, Max 3m Support: USB Storage, USB Barcode Scanner (Standard Keyboard Protocol) Connector: USB Mini-B x 1
	SD Card	SD Card Slot x 1, SDHC (MAX 32GB)
	Function Key	6 Positions with LED
	Printer	Roll Printer (EPSON protocol)
	Mechanical Switches	Emergency Switch 1A-2B, Keylock Switch 1A, 3 Position enable Switch OFF-ON-OFF (2CH)
	Power Switch	Push-Lock power on-off switch built in
	Cable Options	Cable options are 5M and 10M
	Memory & Others	Screen Memory
Backup Memory		512KB: System buffer (10K Word), including Alarm/Logging/Recipe
Backup Period		Permanent
Real Time Clock		Built-in
Status LED		3 LEDs (Power, Operation, Link) Built-in
Power	Consumption	20W
Environment	Operating Temperature	-10 ~ +45°C (14 ~ 113°F)
	Storage Temperature	-20 ~ +60°C (-4 ~ 140°F)
	Operating Humidity	0 ~ 90% RH (No dew)
	Atmosphere	No corrosive gas
	Vibration Endurance	Amplitude 10 ≤ f < 25Hz (2G) X, Y, Z each direction (for 30 minutes)
	Noise Immunity	1000Vp-p (Pulse width 1μs)
	Static Electricity Discharge	Connective discharge from EN61000-4-2: ±4kV
	Shock Endurance	10G X, Y, Z each direction (x3)
	Ground Connection	Class 3 (100Ω under)
	Protection Classification	IP4X
Construction	Certification	UKCA, CE, UL/cUL
	External Dimension	237 x 205 x 103mm (9.33 x 8.07 x 4.05 in)
	Weight	1.1kg (2.43lbs) Excluding Cable Pack
	Cooling System	Natural air circulation
	Bezel Material	Polycarbonate (Flame Resistant)

Accessories

Product Code	Description
IRM-IM	Interface Module
IRM-DST-CBL-05	Cable 5M
IRM-DST-CBL-10	Cable 10M



Design, simulate and deploy advanced HMI applications faster, with build-in tools

The iRis Developer Software provides a powerful and intuitive platform for designing, configuring and deploying advanced HMI applications. Developed to support modern automation environments, it combines flexible engineering tools with intelligent functionality to streamline development, reduce commissioning time and enhance system performance. From initial design through to operation and maintenance, it enables engineers to create efficient, scalable and visually engaging interfaces that meet the demands of today's industrial applications.



Automatic Screen Resizing

Quickly adapt projects to different screen sizes without the need for manual redesign. When changing to a new display resolution, all registered objects and layouts automatically scale to fit, saving time and ensuring consistency across multiple HMI models.



Vector Image Library

Create sharp, scalable graphics using a built-in SVG-based vector library with full 16 million colour support. Unlike bitmap images, vector graphics maintain clarity and precision at any size, delivering a clean and professional interface every time.



User Library and Templates

Accelerate development with pre-built screen layouts and object templates. Easily select, customise and reuse elements to maintain design consistency while reducing engineering time across projects.



Offline and Online Simulation

Test and validate applications without connecting to hardware using offline simulation, or run real-time tests linked directly to a PLC with online simulation. Both environments mirror actual operation, allowing confident commissioning and reduced on-site risk.



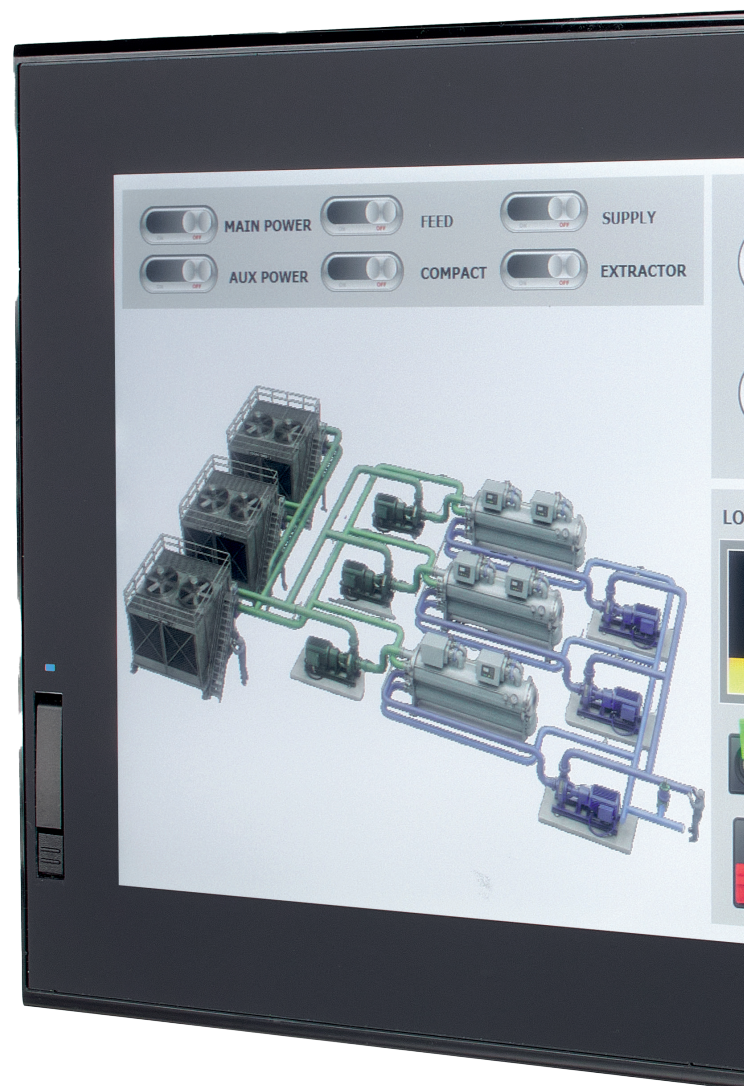
Flexible Object Programming

Configure object behaviour using intuitive condition, effect and action settings. Define logic based on data, time or events, then assign dynamic responses such as visibility changes, movement, scaling or animations without complex coding.



Advanced Data Visualisation

Analyse system performance with a wide range of graphical formats, including bar charts, trend graphs and multi-dimensional displays. Quickly interpret data and make informed decisions with clear, visual insights.

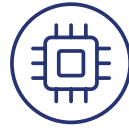


The most advanced development capabilities



Alarm Management and Actions

Monitor system alarms in real time with clear visual alerts and automated responses. Configure actions such as sound notifications, image display or file outputs to ensure rapid awareness and response to critical events.



Semiconductor Protocol Support

Enable seamless communication within semiconductor environments using HSMS SECS/GEM protocols. Support advanced data exchange, monitoring and control in highly specialised applications.



Scheduling and Time-Based Control

Automate operations using detailed scheduling functions linked directly to PLC data. Set precise timings for actions, enabling efficient control of processes without manual intervention.



Operator Memo Functionality

Allow operators to create and review notes directly on the HMI. Store messages, images or data logs for improved communication and traceability on the shop floor.



Java Script Integration

Extend functionality with powerful scripting capabilities. Implement advanced logic, automation and custom behaviours using JavaScript, supported by sample code for faster development.



Real-Time Data Monitoring

Access log and recipe data instantly through intuitive interfaces. Monitor, review and manage production data directly on the HMI without the need for external devices.



Secure User Management

Control access with multi-level user authentication, including password, RFID and other login methods. Track user activity with detailed logs and enhance system security across all operations.



On-Screen File Viewing

Open and review images, text files and PDFs directly on the HMI. This enables quick access to documentation, logs and reports without transferring files to a separate device.



Regulatory Compliance Support

Designed to support regulatory requirements such as FDA 21 CFR Part 11, enabling secure data handling, traceability and audit-ready record management.



On-the-Spot Project Updates

Update or modify projects directly via USB, SD card or internal memory without requiring a PC. Reduce downtime and simplify maintenance with fast, on-site changes.

iRis Series Human Machine Interfaces

iRis Wins in Real Applications

Industrial HMIs are often judged on specifications. In reality, performance is measured on uptime, integration speed and long-term reliability. The iRis Series is designed to deliver consistent results across the full lifecycle of your system from commissioning through to operation and maintenance.



Faster Commissioning

Pre-configured communication protocols and built-in development tools reduce integration time with PLCs and control systems. Automatic scaling across screen sizes removes the need for redesign, enabling faster deployment across multiple projects.

Continuous Operation in Demanding Environments

Industrial-grade components with long backlight life deliver reliable performance in demanding environments. Designed to withstand temperature variation and vibration, the iRis Series ensures stable operation with real-time monitoring and alerts.

Scalable Options Across Projects and Sites

From iRis Standard to iRis Plus and iRis Mobile, iRis adapts to simple machines or complex production lines. Flexible communication via Ethernet, serial and Cloud ensures seamless integration and centralised visibility across multiple sites.

From Panel to Cloud

iRis delivers measurable improvements in performance, visibility and control.

Secure by design

Protect critical Data with role-based access and encryption

Long term reliability

Backed by industrial-grade components and a industry leading 3 year warranty

Cloud ready

MQTT enabled for seamless connectivity to



Global Support

Export technical support, when and where you need it.



Service & Support at IMO

Always putting the customer first...

When you become an IMO customer you become part of our extended family and we care. A lot.

Whether you are dealing with an IMO sales representative at your site or speaking by telephone to our technical support team or checking pricing with our customer services team, our service to you is personal. Our people are trained to quickly learn your requirements and to concentrate on the one thing that brings you back to IMO each time; ensuring that you love working with us.

With customer application labs, technical training suites, guaranteed same day dispatch, buffer stock facilities, even consignment stock locations, everything is thought through and delivered with a care and attention that simply isn't available anywhere else.

Your success is our success...

Our customers' competitive challenges are of paramount importance to our own success so we work tirelessly to help our customers differentiate their product, improve their service offering and grow their market share. Our approach has allowed us to enjoy long-term relationships with some of the largest blue-chip companies in the world and to help tomorrow's success stories on their journey to prominence.

With customer relationships that go back over 30 years we are proud to have earned and maintained the trust of so many of our customers for so long. Regardless of the evolution of technology and market forces, the basic principles at the heart of our business relationships always remain constant.

Further resources

Technical Documentation

Access detailed datasheets, user manuals and wiring guides to support specification, installation and commissioning.

Software & Tools

Download the *iRisDeveloper* software, firmware updates and configuration tools to design, simulate and deploy your HMI projects efficiently.

Training & Support

Benefit from expert technical support, product training and application advice to ensure successful implementation and long-term performance.

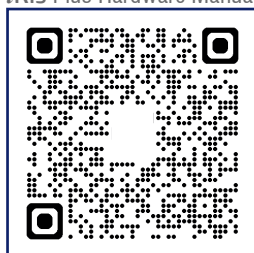
Stay Connected

Keep up to date with new product releases, technical updates and industry insights from IMO at www.imopc.com or follow us on LinkedIn.

Scan QR code for
Technical Support



Scan QR code for
iRis Plus Hardware Manual



Scan QR code for
iRis Standard Hardware Manual



Scan QR code for
iRis Developer Software



IMO Worldwide Offices

IMO Precision Controls Limited

The Interchange
Frobisher Way
Hatfield, Herts AL10 9TG
United Kingdom

Tel: +44 (0)1707 414 444

Email: sales@imopc.com
Web: www.imopc.com

IMO Jeambrun Automation SAS

Parc de la Broye
14 rue du Chauffour
59710 ENNEVELIN
France

Tel: +33 (0)3 20 71 66 98

Email: imo-fr@imopc.com
Web: www.imojeambrun.fr

IMO Automazione

Via Belfiore 10,
50144 Firenze (FI)
Italia

Tel: +39 348 2286699

Email: imo-it@imopc.com
Web: www.imopc.it

IMO Automation LLC

Suite 112,
5910 Shiloh Road East
Alpharetta, GA 30005
USA

Tel: +1 404 476 8810

Email: sales-na@imopc.com
Web: www.imoautomation.com

IMO Canada

1B-701 Rossland Road East
Suite #608
Whitby, Ontario L1N 9K3
Canada

Tel: +1 905 799 9237

Email: sales-na@imopc.com
Web: www.imoautomation.com

IMO South Africa

16 Ezzo Road
Montague Gardens
Cape Town 7441
South Africa

Tel: +27 21 551 1787

Email: info@imopc.co.za
Web: www.imopc.co.za

IMO Pacific Pty Ltd

Unit 9, Dillington Pass
Landsdale
Perth WA 6065
Australia

Tel: +61 1300 34 21 31

Email: sales@imopacific.com.au
Web: www.imopacific.com.au



LinkedIn

Connect with us and follow
IMO Precision Controls for the
latest news, views and reviews



Errors and omissions excepted. Subject to change
without notice. Information correct at time of print.